



Transition to Wales High School

*Information for Students, Parents
and Carers*

What is in this pack?

- Primary to Secondary Transition
- Working Together
- Exciting Subjects to Look Forward to!
- School Uniform
- Music Lessons
- School Meals
- Online Payments (My Child at School)
- Travel Information
- Timing of the School Day and Term Dates
- Contact Information

Primary to Secondary Transition

The transition from Primary to Secondary school can be both exciting and unsettling for students and parents alike. It is important to us that Year 6 students feel confident about their move to Wales High School. We are working hard to provide a range of transition plans to enable all students to get to know Wales High School staff and explore our exciting school facilities. This might include a school tour, question and answer sessions, online resources, opportunities to speak to the transition team and visits by members of the transition team to your child's primary school. Our transition activities also give staff from the learning community the opportunity to work together, learning from each other to develop exciting educational experiences.

Although there are opportunities throughout primary school to experience Wales High School, the formal induction process starts a year in advance when your son or daughter starts Year 6 in September. Our Transition Team will visit staff and students in their primary schools and listen to their teachers and support staff about individual student needs and strengths. We pride ourselves on the relationship we have with our Learning Community and work closely with local schools to support Year 6 students. Throughout the autumn term, the transition team has made contact with all primary schools to learn as much as possible about your child. We have used the time well to gather key information from the staff who know your child in their primary school setting.

We have curricular links in Maths, English, Science and Languages involving teachers at Wales High School working with the primary staff on bridging projects so that the work done in the final stages of Y6 links to the curriculum in Y7.

Once we know who has accepted a place at Wales High School, Ms Unwin and the Transition Team usually meet with all the children and give them the opportunity to ask questions. We receive children from as many as 30 primary schools all over the region!

The highlight of the induction process is usually our Induction Week. This is an exciting chance for your child to meet new classmates and their tutor, who will be pivotal in their life whilst at Wales. The summer induction period enables students to set aside any concerns they may have before the summer holidays. By the time September arrives, many of the myths will have hopefully been dispelled! The induction week is taking place from Monday, 13th to Friday 17th July.

We hope that our efforts and the support given by our primary colleagues enables all the youngsters to enter the next phase of their lives, at Wales High School, highly motivated, confident and prepared to take up the educational and social challenges awaiting them.

For more detailed information on the transition process, visit our website:

www.waleshigh.com/transition



Working Together

Hello, my name is Marissa Unwin and I am currently Head of Year 9 as well as leading on Y6 to Y7 transition. I have a vast experience of pastoral care as I have been Head of Year for several years, as well as being a full time Computer Science teacher. I am very much looking forward to supporting both you and your child at such an important stage of their school career.

The transition to secondary school is an extremely important time for students, both in terms of academic achievement as well as building the “whole” person. Therefore, I am pleased to say that the Year 7 Pastoral Team are on hand to support your child at every step of the way, to ensure that they settle into high school life as smoothly and successfully as possible. I value the importance of establishing a routine during the first weeks of term and have high expectations of every student. I would like to take this opportunity to ask for your help and support on the following, which will ensure a successful school career at Wales High School.

Punctuality and Attendance play a very real part in academic success and are



essential skills for the world of work. At Wales, we take attendance very seriously and expect students to be on the school site for 8.25 am each day. We have a school attendance target of 96.5%, and I am proud to say Year 7 always exceeds this target. Where individuals do not meet this target, support will be provided to improve attendance.

School Uniform establishes the year group identity and a sense of cohesion. Students should be appropriately dressed every day (please refer to pages 11 to 13 for further guidance). Parents play a huge part in making sure their child is appropriately dressed for school.

School Uniform establishes the year group identity and a sense of cohesion. Students should be appropriately dressed every day (please refer to pages 11 to 13 for further guidance). Parents play a huge part in making sure their child is appropriately dressed for school.

Equipped for learning – students should arrive at school with a range of **pens, pencils, a scientific calculator and a ruler every day**. An eraser, coloured pencils and a pencil sharpener are also desirable. Students are expected to record home learning tasks and important information in an independent manner. To support this, we have an online learning platform called Go 4 Schools, which allows teachers to log all homework tasks so that both the student and the home can access this through an online app. In addition to this app, students are provided with a planner to note down important information. We would also expect all children to have a **reading book** every day, which will be used during tutor group time and a variety of lessons.

Organisation – establishing a routine will be an essential part of your child's success at Wales High School. It will be important to establish routines early and make sure your child is used to laying their uniform out, having their bag packed, and home learning complete, ready for every school day. In order to help with this, the school hires out lockers to every student at a cost of £3.50 per year. The Locker Hire letter can be found [HERE](#).

Finally, I believe that the key to a successful year is open communication between staff, students and parents/carers – by working together, we can achieve so much! Therefore, please don't hesitate to contact us - we will always aim to respond within 24 hours. Alternatively, I can be contacted at transition@waleshigh.com should you have a question about any part of your child's transition.

I look forward to working with you to support your child over the next 5 years.



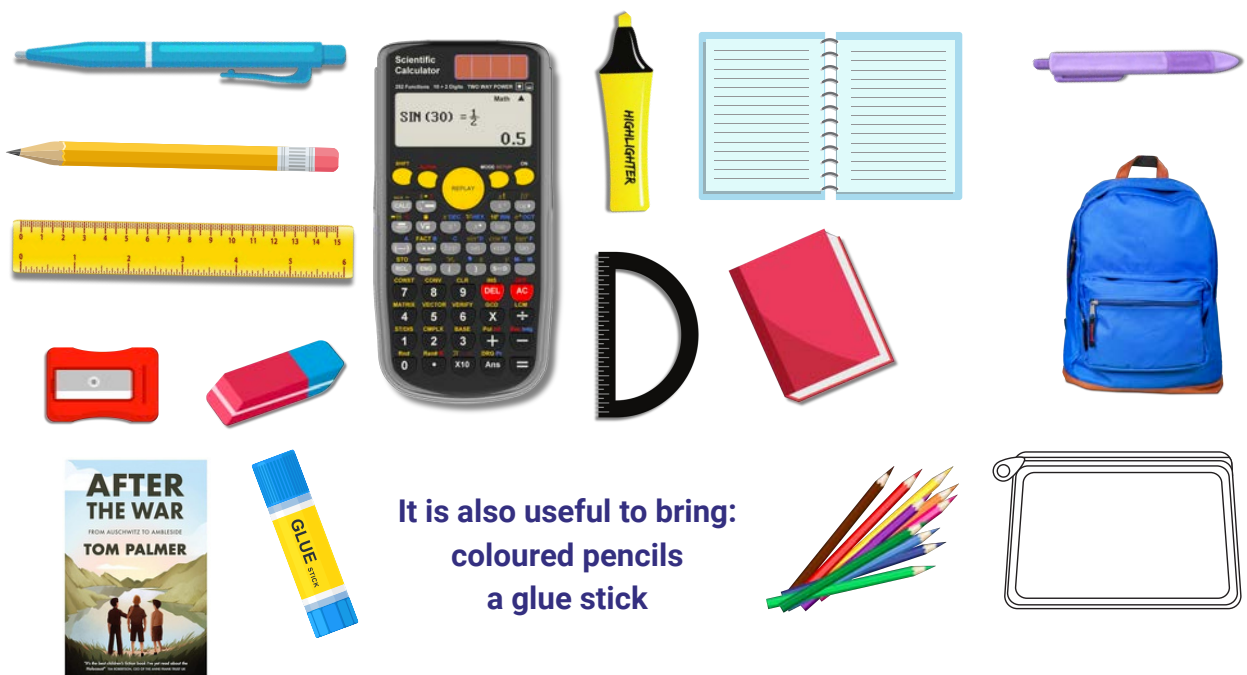
Marissa Unwin

Equipment

As part of the school expectations, your child will be expected to have the following equipment:

- A black or blue pen.
- A purple pen.
- A ruler.
- A whiteboard pen.
- A pencil.
- A rubber.
- A pencil sharpener.
- A protractor.
- A highlighter.
- A mathematical calculator (*We strongly recommend the Casio FX83GTCW/FX85GT*).
- Spare pens.
- A reading book.
- Exercise books for core subjects.
- A clear pencil case.
- RISE Communication Log.
- Masters of Recall.

Students will be in 5 classrooms in one day. This means that they will need to bring all the equipment they require for the day. Students can keep larger items such as their PE kit in their locker; however, students can only go to their locker before school, at break at lunchtime and at the end of the day.



It is also useful to bring:
coloured pencils
a glue stick

Exciting Subjects...To Look Forward to

English

During their English lessons in Year 7, your child will build on their knowledge and understanding from Year 6. Students will develop their written technique, develop literacy skills, study a range of non-fiction and literary texts from the 19th Century to the present day and improve their speaking and listening skills. English lessons will be challenging, interactive and are designed to improve students' communication skills whilst simultaneously encouraging them to be independent learners.

During Y7, students will study:

- Introduction to literature across time
- Shakespearean comedy and building on knowledge of Shakespearean England
- A range of poetry and non-fiction
- A modern novel
- Descriptive, narrative and transactional writing
- A selection of 19th century literature
- How to develop technical accuracy and their craft as writers

Students will also have the opportunity to visit the theatre, meet real life authors and take part in writing workshops and competitions.




Exciting Subjects...To Look Forward to

Mathematics

During their Maths work in Year 7, students will:

- Have confidence to work with numbers of any size, deciding when and if they need to use a calculator for themselves.
- Use practical measuring equipment and understand how metric units give the world a sense of scale.
- Work with geometry of shapes in 2 and 3 dimensions often linking this to other subjects like Art and also the world around them.
- Link all the different areas of Maths together and apply their knowledge when solving complex problems.
- Appreciate how the Data Handling Cycle can help make sense of Statistics.
- Transfer their Maths skills to real life and to Science, Technology and Engineering.
- Investigate probability to see if what we expect to happen comes true!
- Use software and apps to explore their work independently and in groups.
- Talk about and write about their understanding frequently, accurately and in detail.
- Be challenged and allowed to take risks in their Maths and not be afraid to get things wrong!



“The Mathematics department provides a wide and exciting range of activities to keep students engaged in learning and excited about their lessons.”

Exciting Subjects...To Look Forward to

Science



In Year 7 Science, students will study all 3 key disciplines of science (biology, chemistry and physics) through a thematic approach. Students will work towards 'lifting off to space' and learn all about 'The Human Body'. More information is below:

Detective School

Can you solve the mysteries through learning about chemistry?

- Acids, Alkalis and Neutralisation; students will experiment safely with acids and alkalis, using universal indicator to learn about the pH scale
- Chemical, Changes and Reactions; in which students will learn to experiment safely with various chemical substances.
- Solids, Liquids and Gases; explaining the differences between each one as explained by the Particle Model

Countdown to Lift Off

Can you plan a mission to space based on your knowledge of physics?

- Energy – What is energy and how can we use it to fuel our trip to space?
- Forces and motion– how and why do different objects move?
- Space and the solar system – Planets, stars, day and night. How and why do natural phenomenon such as solar eclipses occur?

The Human Body

Learn all about how our bodies work from tiny cells up to organ systems.

- Cells- learning how both animal and plant cells are structured and the role of each individual part of a cell.
- Reproduction- in humans and other living things. Students will study the way our bodies change during adolescence and present data discovered in surveys as graphs and charts.
- Structure & function of body systems.

STEM (Science, Technology, Engineering and Maths)

Students at Wales High School also have the opportunity to take part in STEM challenges, both in lessons and out. Students have the opportunity to take part in various trips to scientific industries, STEM fairs and various competitions.



Exciting Subjects...To Look Forward to



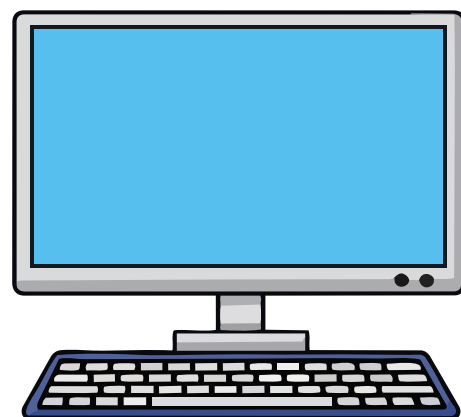
ART

In Art, students learn how to take their artistic skills to the next level in specialist classrooms using a wide range of materials and techniques. Practical work is informed by the study of artists to improve contextual understanding, broaden horizons and inform students about the role of artists and possible creative career pathways. Traditional mediums of drawing and painting are taught alongside printmaking, mixed media, photography, 3D and ceramics to offer a broad and varied creative curriculum. Students will explore ways to express ideas and thoughts in a visual way and will experience their work being exhibited at least once a year.

COMPUTER SCIENCE

In a world where technology is growing at an exponential rate it is important that you have a basic understanding of how technology works and how to work with new technology, and are able to use familiar and new software safely and effectively. The programme in year 7 will include an introduction to the school's own ICT systems and network. Students will be given their own school e-mail account and the work in lessons will cover a range of topics including:

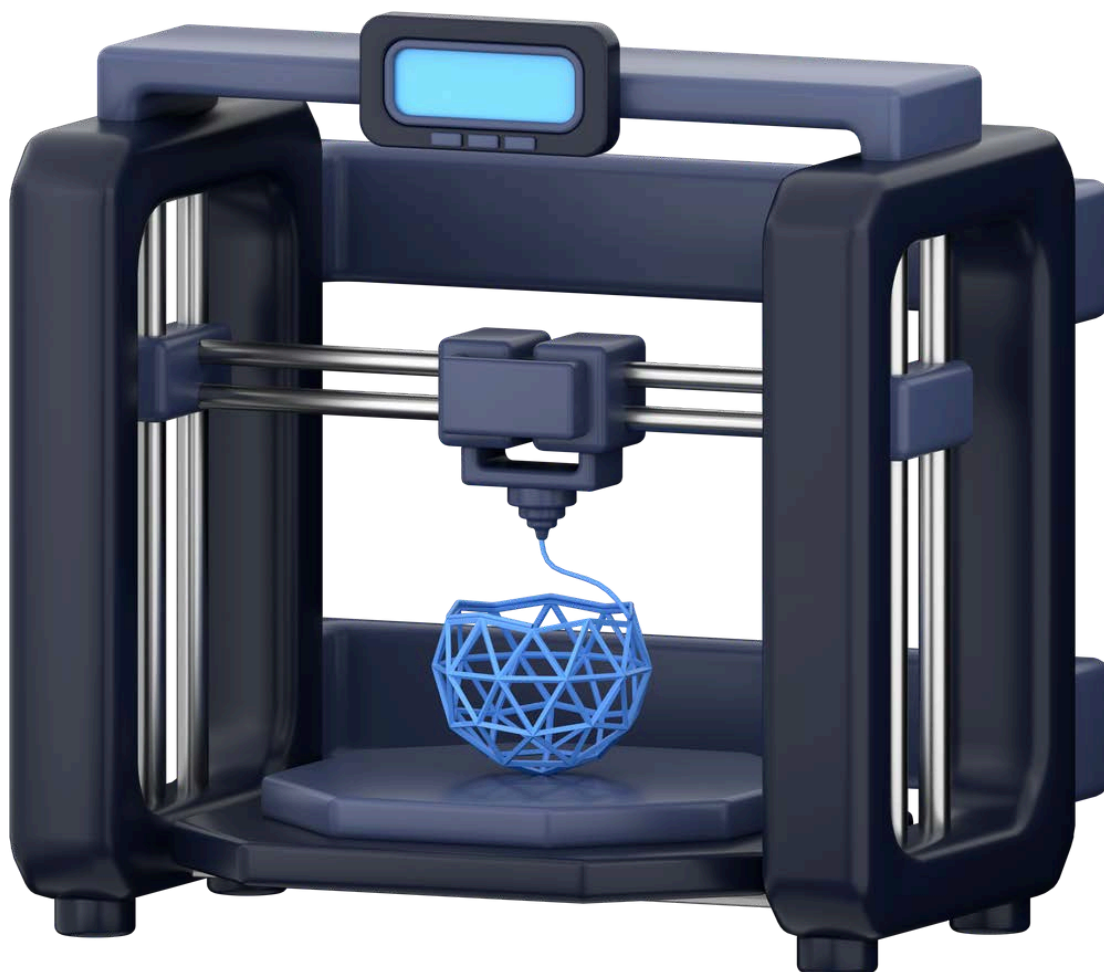
- Using Email and the Internet
- Online Safety
- Programming Skills
- How Computers Work
- Spreadsheet Modelling
- Graphic, Movie and Sound Editing



Exciting Subjects...To Look Forward to

DESIGN & TECHNOLOGY

Design and Technology is an inspiring, rigorous and practical subject. Using creativity and imagination, pupils design and make products within a variety of contexts, considering their own and others' needs, wants and values. They acquire a broad range of subject knowledge and draw on disciplines such as mathematics, science, engineering, computing and art. Pupils learn how to take risks, becoming resourceful and innovative. Through the evaluation of past and present design and technology, they develop a critical understanding of its impact on daily life and the wider world. At the end of KS3 students will have studied parts of the following subject areas: Product Design, Electronics, Engineering, Graphics, Computer Aided Design & Manufacture and Food Studies.



Exciting Subjects...To Look Forward to

GEOGRAPHY

Pupils will start out their secondary school Geography education by learning about Place. As part of this topic pupils will learn about where places are around the world, how to use maps and how places change over time. Our second term is all about Ecosystems, with a particular emphasis on rainforests, deserts and polar environments. We will learn about what makes these places unique by studying their climates, wildlife and how humans interact with them. The third term will be focused on learning about Risk. We will look at what makes our planet a risky place to live in and identify which risks are caused naturally and which are caused by humans.

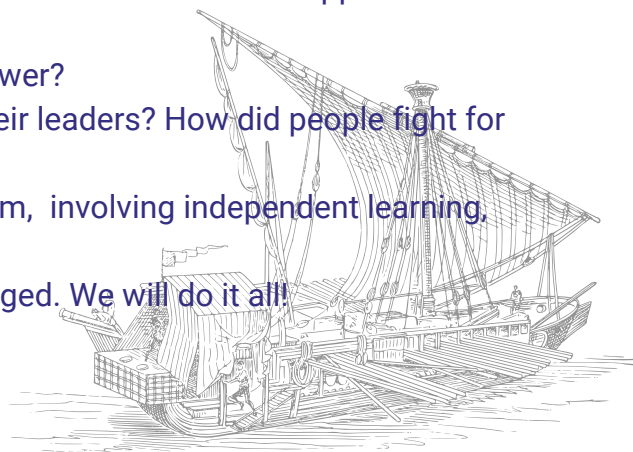
Geography is a dynamic, relevant and endlessly fascinating subject. Pupils that excel in Y7 will be able to write descriptions and explanations, understand how to use maps and will know how humans in different parts of the world interact with each other and the environment around them.



HISTORY

Students study the history of power, monarchy and democracy in England between 1066 and the present day:

- Medieval Realms - The Norman Conquest. How did William win the Battle of Hastings? How did the Normans keep control of this country? How did people live in Medieval England?
- Monarchy - Did a medieval King get to do whatever he wanted? What happened when a Monarch made a mistake?
- Parliament - When did it start? How did it gain power?
- Democracy - When did people start to vote for their leaders? How did people fight for the right to vote?
- Project work - Students will do a project every term, involving independent learning, local and family history and bags of creativity!
- Death, scandal, power. How and why things changed. **We will do it all!**



Exciting Subjects...To Look Forward to

MODERN FOREIGN LANGUAGES

Bonjour! ¡Hola! Students here at Wales have the opportunity of learning either French or Spanish. They will have the opportunity to learn about new cultures and expand their vocabulary in their new language. Students learn four main skills: reading and listening comprehension, holding conversations and writing. In Y7, they will learn how to introduce themselves, discuss their own likes, dislikes and personality. They will also learn how to describe their loved ones, before moving on to using their new language to be able to discuss their new school life at Wales High School...all in French or Spanish! Students will enjoy a range of activities in lesson time to really get the most out of their new language. Lessons could include songs, fun games and competitions for learning, team activities and creative pieces of writing. Classes will also get the opportunity to begin to delve into the French and Spanish-speaking worlds, broadening minds and horizons for our young people. We even have the opportunity to write to a pen-pal in France, Spain, or Paraguay! We are so looking forward to seeing you in the MFL department! À bientôt! ¡Hasta pronto!



Exciting Subjects...To Look Forward to

MUSIC



In Year 7, students will explore a wide range of musical styles from a variety of different cultures and musical eras. Over the course of Year 7, students will perform on African drums, Keyboards, Tuned and un-tuned percussion as well as sing, compose and perform their own work throughout each topic. Students who have lessons on their own instruments are encouraged to use their own instruments when performing and composing music.

In addition to this, students will listen to and be taught to appreciate music in a variety of styles from classical music to pop; this builds on their understanding of the musical elements which are an essential component of understanding music.

As a department, we also run various clubs and activities, including choir, orchestra, keyboard club, and musical theatre club. For any Year 7 students wishing to learn a musical instrument in more depth, or who are currently playing a musical instrument with Rotherham Music, we can facilitate lessons for a variety of instruments, including:

- Voice
- Piano
- Percussion (Drums)
- Guitar
- Woodwind (clarinet, saxophone, flute etc.)
- Brass (cornet, trombone, French horn etc.)
- Strings (violin, cello etc.)



There is a charge for these peripatetic lessons; we do offer some subsidies; there is a link to the form on page 16, where you can find out more, or you can contact Miss Cunnington or Mr Corner.

Music is fun, creative and a fundamental part of the KS3 curriculum, and we look forward to welcoming you into the department!

Exciting Subjects...To Look Forward to

PHYSICAL EDUCATION

PE at Wales aims to inspire students to experience a broad range of sporting activities, promoting enjoyment and confidence. The curriculum has been designed to develop practical skills in a variety of activities, both individual and team, whilst giving students the chance to participate in new sports they may not have discovered yet. The team of PE staff use exciting and initiative teaching methods that create and develop passion for physical activity.

In Y7, students understanding the importance of a healthy, active lifestyle is vital to the curriculum. Respect, effort, resilience, and motivation are foundations of our core values and key features we feel will prepare students for lifelong participation in physical activity.

In addition to the fantastic lessons your child will experience, there will also be plenty of opportunities to get involved in a variety of clubs and sports teams at lunchtimes, after school and weekends. These extra-curricular clubs can be recreational or see students become members of our highly successful teams. These teams compete in local, regional, and national competitions, giving students the opportunity to achieve success. Follow the PE X account @WalesHighPE to see all the fantastic experiences we will offer your child.

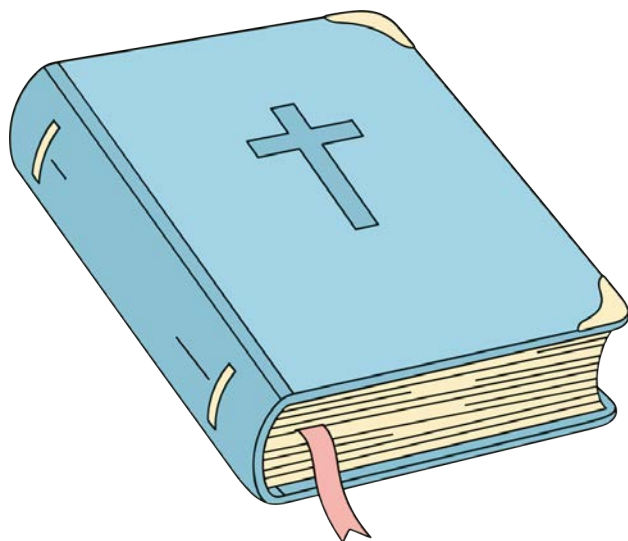


Exciting Subjects...To Look Forward to

RELIGIOUS EDUCATION

In Year 7, RE students will be able to study a range of religions including Christianity, Islam and Judaism. They will be able to make links between their own beliefs and the beliefs of others and also be able to answer important questions such as what it means to be religious.

They will also be learning about important religious people and festivals and linking the traditions with modern day practices.



SCHOOL UNIFORM



At Wales High School, we are proud of our tradition of high standards and the smart appearance of our students. Our uniform reflects our values and plays an important role in school life.

Wearing our uniform:

- Promotes positive attitudes and high expectations
- Creates a sense of equality and belonging
- Builds pride in being part of Wales High School
- Encourages students to take pride in their appearance
- Is practical, professional, and smart
- Ensures our students are easily recognisable as members of our community

SCHOOL UNIFORM



Black blazer with school badge

Plain white school shirt

School tie

Optional plain grey/ black V neck jumper

Dark grey or black straight cut and knee length skirt

Plain black or dark grey trousers
(Tailored shorts will be allowed during the summer months once announced by the Headteacher).

Plain black flat shoes (no trainer-style shoes)



SCHOOL UNIFORM

Our uniform is not seasonal and should be worn all year. All items are essential and just one item is optional (this is indicated on the list below). Please note that some adaptations will be made at the discretion of the Headteacher, particularly in warmer weather.



Black blazer with school badge and school tie.



Plain white school shirt (shirts must be tucked in at all times).



Dark grey or black straight cut and knee length skirt.



Plain black or dark grey trousers (no leggings).

(Tailored shorts will be allowed during the summer months once announced by the Headteacher).



Optional plain grey/black V-neck jumper.



Plain black flat shoes (no trainer-style shoes).

FOOTWEAR

For some time, many well-known and reputable shoe shops have sold soft leather, trainer-style footwear that they will advertise as 'school shoes'. These same examples of footwear are also sold in sports shops and are advertised as suitable for wearing when taking part in sport.

As a result of such branding and advertising, it is understandable how some families have assumed that such shoes are suitable for Wales High School uniform. Please take a look below at some examples of suitable and unsuitable school shoes.



OUTDOOR COATS

Outdoor coats are permitted; however, they must be appropriate coats and not jackets or hoodies. Coats are to be worn in addition to the blazer and are not permitted to be worn during lessons.

Coats are traditionally thicker, longer and worn over the top of blazers.



Jackets and hoodies will be confiscated by the Pastoral Team if students wear them on the school site.

Jackets and hoodies are thinner, shorter and not designed for being worn over the top of your blazer.

Although obvious in most cases, staff will make the decision of what constitutes as a jacket.



UNIFORM STANDARDS

Uniform Standards

We are proud of the way our students present themselves and believe high standards of uniform reflect our values and support a positive learning environment.

Uniform Standards

✓	Correct uniform must be worn at all times.
✓	Outdoor coats must be worn over blazers and removed at the classroom door before you enter the room.
✓	All students should have a suitable bag that can carry an A4 folder.
✗	Jewellery is not permitted, except for a watch and one stud earring in each ear.
✗	Facial piercings are strictly prohibited.
i	Any items beyond these will be confiscated by staff. For persistent breaches, items may be retained until collected by a family member.
i	Students wearing facial piercings will be referred to the pastoral team and will work outside the classroom until the issue is resolved.
✗	Excessive make-up, false nails and nail varnish are not permitted in KS3 and KS4.
i	In exceptional circumstances, students may wear medically prescribed camouflage make-up if supported by a medical note.
i	Students who are unable or unwilling to remove prohibited items will work outside the classroom until the issue is resolved.
✗	Hoodies and jumpers (that are not black or grey V-neck, or otherwise approved by the school) are not permitted in school and will be confiscated.

More information about our school uniform can be found online here:

https://www.waleshigh.com/uniform2025_2026/

PE UNIFORM

Our PE kit is designed to promote comfort, performance, and pride in representing Wales High School. The smart, practical design ensures students can participate fully in all sporting activities while reflecting the school's high standards. Each item combines durability with ease of movement, helping every student to feel confident and prepared—whether in lessons, training, or competition. Please note that some adaptations will be made at the discretion of the Headteacher, particularly in warmer weather.



Sport shirt with your House colours.



Plain black shorts, tracksuit bottoms or sports leggings (no cycling shorts).



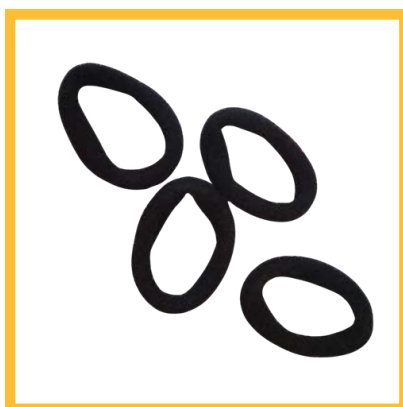
Black sweatshirt or plain black sweater.



Sport socks or football socks (preferably plain black).



Trainers

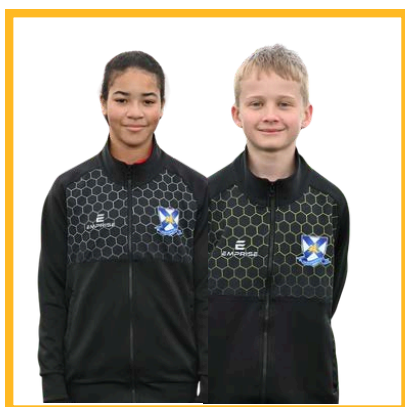


Hair bobble (for any student with long hair).

PE UNIFORM OPTIONAL

Optional but recommended items

It is important that students stay warm and comfortable and during outdoor PE lessons. While the standard PE kit is still required, we recommend that students bring along additional items to help them keep warm and protected. These are optional but strongly encouraged, especially during the winter months



Wales black 1/4 zip or plain black long-sleeved sports top.



Base layer tops and shorts.



Football boots - no bladed or metal studded boots (including metal tipped studs).



Shin pads



Beanie hat for outdoor lessons.



Gloves for outdoor lessons.

UNIFORM SUPPLIERS

Wales High School uniform and PE Kits can be purchased from the following suppliers. Please note, for convenience, Wales High School students can still purchase school ties from the Welcome Entrance and Student Reception:

Johnny D Schoolwear

All Uniform items/PE Kit stocked:

33 Howard Street, Rotherham. S65 1JQ

Tel: 01709 370032

Website: <https://johnnyd.co.uk/>

Pinders Schoolwear

All Uniform items/PE Kit stocked at 3 locations:

- Mansfield Road, Aston, Sheffield, S26 2BS
- Crystal Peaks Market, Crystal Peaks, Sheffield, S20 7PQ
- The Bus Station, College Walk, Rotherham, S65 1JQ

Tel: 0114 2513275/01709 720043

Website: [Our uniform is not seasonal and should be worn all year. All items are essential and just one item is optional \(this is indicated on the list below\).](#)

[Please note that some adaptations will be made at the discretion of the Headteacher, particularly in warmer weather.](#)

Parents/Carers may decide to buy a blazer from a supplier of their choice and then add the badge afterwards. Badges can be purchased from the school, or families could choose to use the services of Tracie B Personalised Embroidery, who will embroider the school badge onto a blazer of your choice:

Tracie B Personalised Embroidery

15 Sheffield Road, South Anston, S25 5DT

Tel: 01909 807055/ 07969080056

INSTRUMENTAL TUITION

If your child is currently receiving instrumental tuition at primary school, we would like the transition to Wales High School to be as smooth as possible in respect of lessons offered by the visiting team of peripatetic teachers from [Rotherham Music](#).

If your child does not currently have lessons, there may also be the opportunity to begin instrumental tuition for any student wishing to take advantage of this service. Children are withdrawn from their 'normal' lesson on the day concerned and have their instrumental lesson in the Music Department for a period of 15, 20, or 30 minutes. Lessons are timetabled on a rota basis so that no one lesson (or part lesson) is regularly missed. The majority of children catch up any work missed relatively easily, and subject staff liaise closely with Music Department staff to keep a watchful eye on students' progress.

Example timetable (each student is designated a letter):-

TIME	WEEK 1	WEEK 2	WEEK 3	WEEK 4	WEEK 5
10:00	A	B	C	A	E
10:20	B	C	D	E	C
10:40	C	D	E	B	D
11:00	D	E	A	C	A
11:10	E	A	B	D	B

Students bring their instruments to school on the day of their lesson and leave them locked in the teaching room in the Music Department at the beginning of the day. They then come along to the Department at the allotted time, collect their instrument and have their instrumental lesson. After the lesson they return to their 'normal' lesson.

INSTRUMENTAL TUITION

All children receiving instrumental tuition at Wales are strongly encouraged to join in an instrumental ensemble (Orchestra), as and when appropriate.

I would also recommend that you support our public musical ventures, which are given throughout the year. These include concerts, stage productions and musical evenings. Instrumentalists are also entered for public examinations from time to time at the discretion of the instrumental teacher and the parent concerned.

If your child does not own an instrument, they can hire one from Rotherham Music for a small fee each term. All privately owned instruments should be insured to cover any time they are on the school premises or in transit. Wales High School has a clear policy, in line with Local Authority charges, relating to the provision of instrumental tuition, and an extract of the current Peripatetic Music Lessons Policy is included on the Music Tuition Letter (please request a copy if required).

Instrumental lessons begin in the first week of each term apart from in September where they start in the second week; during the first week your child will be contacted with detailed information regarding the provision of lessons.

Please complete the Form [HERE](#) or alternatively email your requirements to ecu@waleshigh.com. Thank you for your help.

I look forward to meeting your child and trust they will have a happy and successful experience at Wales.

Mr S Corner
Head of Music Department (scn@waleshigh.com)

CATERING AT WALES HIGH SCHOOL

School meals are provided exclusively by our in-house Catering Team. The service operated in school is a cashless cafeteria system.

Each student is issued a personal account, where funds can be deposited and stored for their personal use.

Accounts can be credited from home using the MCAS online payment system.

If your child is entitled to free school meals, the account is automatically credited daily between the hours of 9.30am to 1.50pm. This will allow them to purchase items either at morning break 10.50 - 11.10am or lunch 1.10 - 1.50pm.

Students use their account to pay for their chosen meal; the value is deducted from the account at the point of sale, and no cash is taken at the tills.

Students can check the balance of their account at any of the revaluation terminals located around the school, alternatively you can check your child's balance and purchases made through the MCAS online system.

Students should not credit the account of another student to purchase their meal.

Over the next two pages you will find examples of the delicious food prepared by our catering team. Please note prices may be subject to change.



Served Between 1.10 - 1.50pm
(Friday 1.30 - 2.00pm)

	Student	Staff
Calzone Cheese	£1.70	£2.04
Chicken/Meatball Calzone	£1.80	£2.16
Cheese Pizza slice	0.90	£1.08
Pepperoni Pizza slice	0.95	£1.14
Chicken Bake	£1.25	£1.50
Steak Bake	£1.25	£1.50
Ham Panini	£1.65	£1.98
Pepperoni Panini	£1.70	£2.04
Two Cheese Panini (v)	£1.70	£2.04
Vegan Cheese Panini (vg) - Made to order	£1.70	£2.04
Chicken Mayo Sandwich	£1.65	£1.98

v = vegetarian
vg = vegan

Look out for our Daily Specials
on the Student / Staff Bulletin!

BREAKFAST CLUB		
SERVED BETWEEN 07:55-08:25HRS DAILY		
	Pupil	Adult
5 Item Breakfast	£2.20	£2.64
Beans on Toast	£0.85	£1.02
2 x Egg (Poached or Scrambled)	£1.22	£1.44
Cheese on Toast	£0.85	£1.02
Bacon Bag	£1.35	£1.62
Sausage Bag	£1.25	£1.50
Breakfast Wrap (Sausage, Bacon & Hash Brown)	£1.37	£1.65
INDIVIDUAL PRICED ITEMS		
Sausage	£0.45	£0.54
Slice of Bacon	£0.55	£0.66
Hash Brown	£0.45	£0.54
2 x Eggs (Poached or Scrambled)	£0.90	£1.08
Beans	£0.55	£0.66
Slice of Toast & Butter	£0.30	£0.36
Toasted Bagel	£0.65	£0.78
Pain-Au-Chocolat	£0.90	£1.08
Croissant	£0.70	£0.84

Morning Break		
SERVED BETWEEN 10:50 - 11:10 HRS DAILY		
	Pupil	Adult
Mon, Wed, Fri		
Sausage Muffin	£1.30	£1.56
Ham & Cheese Bagel	£1.50	£1.80
Focaccia Pizza	£1.00	£1.20
Cheese & Onion Pasty	£1.30	£1.56
Vegan Sausage Roll	£0.75	£0.90
Tue & Thur		
Sausage Roll	£1.00	£1.20
Cheese & Ham Toastie	£1.25	£1.50
Cheese Toastie	£1.15	£1.38
Focaccia Pizza	£1.00	£1.20
Fish Finger Sandwich	£1.10	£1.32
Vegan Sausage Roll	£0.75	£0.90

CATERING AT WALES HIGH SCHOOL

		WEEK 1				
		MONDAY	TUESDAY	WEDNESDAY	THURSDAY	FRIDAY
CHOICE 1	Chicken Korma Rice	Meatballs in Tomato Sauce Penne Pasta	Roast Beef Yorkshire Pudding	Vegetable Lasagne Garlic Bread	Battered Haddock & Tartar Sauce	
	Stir Fried Vegetables Black bean Sce Basmati Rice	Vegetable Hotpot New Potatoes Red Cabbage	Sausage Toad in the Hole	BBQ Chicken Spicy Potato Wedges	Macaroni Cheese	
	Fresh Fruit Salad	Vanilla Sponge Pudding & Custard	Rice Pudding & Jam	Banana—Berry Smoothie	Fruity Flapjack	
CHOICE 2						
DISSERT						

		WEEK 2				
		MONDAY	TUESDAY	WEDNESDAY	THURSDAY	FRIDAY
CHOICE 1	Chickpea & Green Lentil Curry & Rice	Chicken Stir-fry & Noodles	Roast Pork Stuffing	Lasagne & Garlic Bread	Breaded Haddock & Tartar Sauce	
	Beef Chilli Rice	Sundried Tomato & Basil Pasta Bake	Onion Bhaji Naan	Leek & Potato Pie	Quorn Burger in a Seeded Bun	
	Syrup Sponge & Custard	Jam Roly-Poly & Custard	Apricot Bread & Butter Pudding & Crème Fraiche	Fresh Fruit Salad	Apple Crumble & Custard	
CHOICE 2						
DISSERT						



		WEEK 3				
		MONDAY	TUESDAY	WEDNESDAY	THURSDAY	FRIDAY
CHOICE 1	Shepherds Pie	Fajita Pulled Chicken Wrap & Spicy Potato Wedges	Gammon & Pineapple	Sweet & Sour Vegetable Spring Rolls	Battered Pollack & Tartar Sauce	
	Falafel & Hummus Wrap	Cheese & Broccoli Flan Spicy Potato Wedges	Quesadilla Vegetable Chilli	Moroccan Lamb & Rice	Creamy Cheese N Tomato Pasta	
	Chocolate Sponge Chocolate Sce	Fresh Fruit Salad	Apple Pie & Crème Fraiche	Lemon Sponge & Custard	G/F Chocolate Brownie Custard	
CHOICE 2						
DISSERT						

USING THE CASHLESS SYSTEM

The catering service for students at Wales High School is provided by a cashless system. There are several service points at which students may purchase food, all operating on the cashless system, enabling a quick service, whilst allowing individual choices to be made.

What is a Cashless System?

It is a computerised system for student recognition through biometric technology. The system recognises each individual student, holding their individual cash balances, recording cash spent and cash received.

A training session will be arranged by the school to give a demonstration to all students in small groups.

How are students recognised by the system?

Each student will be issued with their own personal account, which when accessed, will enter them into the system program and identify them by a unique number and their photograph.

How is money entered into the system?

By online payments using the MCAS online payment system. Parents simply log-on via the school website and select 'School Catering', add funds to the basket and check out as you would on any other internet site. Within 15 minutes, the school receives an automatic update of all payments that have been made. Parents can also see online the items their child has purchased from the catering service. Please see online payments for more information about using MCAS.

How does the revaluation station work?

Firstly, the students access their account by using either their finger or unique personal PIN on the reader mounted on the revaluation station, which will display the students name and current cash balance held within the system. The revaluation stations will be open from 7.50 am until 1.50 pm every day and students may check their accounts at any time as long as they are not late for lessons.

USING THE CASHLESS SYSTEM

How will the student be able to check what current cash balance is held in the system at any one time?

By using the revaluation station, they need to access their account by the preferred method (biometric or PIN) to display the current cash balance. Press the red button to finish.

If we pay for a set number of school meals, can it be spent in one day?

No, a daily spend limit of £10.00 will be set for all students in the school and no food above that limit can be purchased. On request, an individual student limit of your choice may also be set up to help with budgeting on a daily basis.

What if the student does not hold a sufficient cash balance one day to pay for a school lunch?

No student is refused a school lunch because they have not brought their lunch money to school with them. The student should speak with their Head of Year who will arrange a loan for the day. The student would be expected to bring the money with them the next day to repay the loan.

FREE SCHOOL MEAL ELIGIBILITY

The system works exactly the same for all students whether they pay or have a free school meal. All students are issued with an account that is used in exactly the same way. The amount allocated for the free school meal will be automatically credited to individual accounts daily and can be accessed at either morning break or lunch time.

Any under spend or missed free school meal allowance will be identified by the system and will be deducted the same day so that students do not build up a credit of unused spend.

Extra cash can be added to a student's account online (MCAS), to enable a greater daily spend on the school lunch than allocated by their free meal allowance.

Please note that you will need to reapply for the Free School Meal to issued when your child joins us in September - please email benefits@rotherham.gov.uk to inform them of a change of school.

How can I find out how much school meals cost?

All pricing of food and drinks on offer are on the school website in the 'Parents' section under 'Catering / Menus' (www.waleshigh.com/school-menu). Currently the 'Meal of the Day' (traditional school meal) including a dessert is £2.65.

What if a student has a food allergy?

Should you inform us that your child has a specific food allergy, or is a diagnosed diabetic, this medical information can be coded into the system, preventing foods with allergy ingredients from being served to a particular student, by automatically locking out relevant buttons on the till keyboard.

Will students have problems in using this system?

Some students may find it difficult to control their accounts for the first couple of weeks, but because of a daily spend limit, most learn this important life skill very quickly and will enjoy being in control of their accounts.

Will we be able to have any information on how the system is being used?

Reports can be obtained from the system, giving comprehensive information on all aspects of use for each individual student as well as each day's service. These reports can be for a specific day or between any dates you wish, they will be dated and timed to the minute, and can be obtained from the online payments system. The reports show:

- Every item of food served and the total cost of each serving.
- Individual payments made either directly to the school or manually entered into the system.

Guidance Notes for using the Revaluation Stations

- Press the red button (to close the previous user account)
- Access your account by either Biometric or PIN
- Observe your cash balance on the screen
- Press the red button

MY CHILD AT SCHOOL

MCAS is a parent app and gives parents/carers access to various aspects of your child's progress.

MCAS also has an online payment facility where you will be able to view and top up your child's catering account, pay for visits and other school items such as lockers, ties, etc. You can also see other information such as timetables, update personal details as well as send and receive messages to and from Wales High School.

Before your child arrives at school, you will be emailed an invitation to create a new account on MCAS, which will give you access to a variety of information about your child's day-to-day activities in school. If your child's primary school already uses MCAS and you have an account set up, you will be able to add Wales High School to your existing account. Similarly, if you have other children at Wales High School, you will be able to add your child to this account so that all information is accessible via the one account.

If you need help to register once you have received the details and access code, please contact: ictsupport@waleshigh.com



MyChildAtSchool (MCAS)

TRAVEL TO SCHOOL

Students are expected to make their own way to and from school. The school bus timetables are available to view on the School website. Please use the link [HERE](#). It is useful to check the website regularly as the timetable may vary on occasion, where roadworks, etc., result in the bus company re-routing the service.

Statutory Entitlement to Zero-Fare Bus Pass

The Local Authority only has a statutory responsibility for providing transport for students who live 3 miles away from and attend their catchment school. Students who are eligible for free travel under this criteria will need to apply online via Rotherham MBC website:

<https://www.rotherham.gov.uk/benefits/find-free-school-travel/5>

The zero-fare bus pass is only for use on the designated transport between home and school.

Discretionary Entitlement to Zero Fare Bus Pass

Students who live 2-6 miles away from one of their 3 nearest available schools and who are on a low income may be awarded a discretionary zero-fare bus pass by Rotherham MBC. To qualify on low income, the family should receive the maximum Working Tax Credits, receive benefits, or students should be eligible to receive free school meals.

Students who have special educational needs which include the categorisation 'physical disability' may also be entitled to a discretionary zero-fare bus pass.

You can apply for a discretionary zero-fare bus pass online here:

www.rotherham.gov.uk/xfp/form/362










Zoom Under 16 Travel Pass

All students aged between 11-16 who live in South Yorkshire are entitled to apply for a Mega Travel Bus Pass, which allows them to claim the discretionary fare on buses, trams or trains in South Yorkshire. Currently, the price of this pass is free of charge and lost/replacement passes cost £7.00. For more information on how to apply, visit any Travel South Yorkshire information centre or go to: <https://mysy.travelsouthyorkshire.com/login/>

TERM DATES 2026-2027

2026-2027	First Day of Term	Last Day of Term
Autumn Term	Tue 1 Sept 2026 (Staff only) Wed 2 Sept 2026 (1st day for Students)	Fri 23 October 2026
	Mon 2 November 2026	Fri 18 December 2026
	School Closure Days Fri 27 Nov, Mon 30 Nov 2026 and Mon 4 January 2027	
Spring Term	Tue 5 January 2027	Fri 12 February 2027
	Mon 22 February 2027	Thu 25 March 2027
Summer Term	Mon 12 April 2027	Friday 28 May 2026
	Bank Holiday - Mon 3 May and Mon 31 May School Closure Day (TBC)	
	Tue 7 June 2027	Wed 21 July 2027

Timings of the School Day

School Day Begins: 8.25 am	
Lesson 1: 8.30 - 9.30 am	
	Movement: 9.30 - 9.35 am
Lesson 2: 9.35 - 10.30 am	
Break: 10.30 - 10.50 am	
	Movement: 10.50 - 10.55 am
Lesson 3: 10.55 - 11.50 am	
	Movement: 11.50 - 11.55 am
Lesson 4: 11.55 - 12.50 pm	
	Bell: 12.50 pm
Y7,8,10	Y9,11,12,13
 Lunch 1: 12.50 - 1.25 pm	 RISE 1: 12.55 - 1.25 pm
	Bell: 1.25 pm
 RISE 2: 1.30 - 2.00 pm	 Lunch 2: 1.25 - 2.00 pm
	Movement: 2.00 - 2.05 pm
Lesson 5: 2.05 - 3.00 pm	

THE WALES WAY

NURTURING GOOD, HAPPY AND SUCCESSFUL PEOPLE WHO ARE PREPARED FOR LIFE.



BEHAVIOUR EXPECTATIONS

THE WALES WAY



EVERY LESSON, EVERY TIME



Arrive on time
Make every minute count towards your learning



Wear the correct uniform
To avoid disruption to learning



Enter the classroom in a calm manner
A quick start will allow you to focus and maximise your learning



Have all your equipment out at the start of the lesson
Be ready and prepared to learn AND complete the Focus 5 task on your mini-whiteboard



Listen carefully so you can hear all instructions
To understand the lesson content/ activities



Stay focussed and engaged when working
So you can complete your work to the best of your ability



Always raise your hand before asking and answering questions
To avoid speaking over others



Ask permission to leave your seat
Wandering around the classroom can distract the learning of others



Be respectful to everyone and listen when others are talking
Treat everyone as you would wish to be treated yourself



Follow all instructions given, first time, every time
So you can learn in a safe and calm environment



At the end of the lesson:

- Pack **YOUR** equipment away
- Stand behind **YOUR** chair
- Check **YOUR** uniform
- Wait until **YOU** are dismissed

THE WALES WAY BEHAVIOUR FOR LEARNING



Nurturing good, happy and successful people who are prepared for life.

**GET IT RIGHT
FIRST TIME,
EVERY TIME**

STAGE >>> ACTION

CHANCE

CHANCE

Poor behaviour is addressed and the student is warned of a potential sanction if the behaviour continues.

S1

MOVE

If the poor behaviour continues, the student will be moved within the classroom. The student will be issued with a 15-minute detention with the classroom teacher.

S2

REMOVE

If the poor behaviour continues, the student will be moved within the department. The student will be issued with a 30-minute Head of Department after-school detention.

S3

ESCALATION

If poor behaviour continues, studentinfo@waleshigh.com will be contacted and the student will be collected. The student will be issued with a 45-minute Senior Leader after-school detention.

**EMERGENCY
CONTACT**



In the event of extreme behaviour or defiance, a member of the EC Team will be contacted to collect the student. This will result in Internal Exclusion and a 1-hour Senior Leader after-school detention.

LESSON ROUTINES

THE WALES WAY



EVERY LESSON, EVERY TIME



Know our students. Have a clear understanding of prior learning and check Pupil Profiles on Bromcom



Meet and greet students at your classroom door



Check uniform as students enter the room



Focus 5 task – Retrieve, Rehearse, Revise.
Use mini-whiteboards to identify misconceptions and check ALL students learning



Take the register on Bromcom



Share an objective, question or title with students and make sure it is written down and underlined



Reinforce standards and presentation expectations



Staff to mark in **Green pen** and Students to use **Purple pen** to complete D.I.R.T work



Praise and rewards recorded on Bromcom. Use behaviour points to reinforce standards



At the end of the lesson:

- Students should pack their equipment away
- Stand behind their chair
- Staff should check student's uniform
- Dismiss your class in a calm and orderly manner

PRESENTATION EXPECTATIONS

THE WALES WAY



EVERY LESSON, EVERY TIME



Write the title, objective or question and the date in your book

To find completed work easily and help with your revision



Always write in **black** or blue pen

So your work is presented appropriately



D.I.R.T work to be completed in **purple** pen

To show how you have improved your work



Always use a ruler to underline

This will make titles stand out and keep your work neat



Use a pencil for diagrams and pictures

So you can improve them if needed



Stick sheets in your book with a glue stick if directed to do so by your teacher

To keep important pieces of work and information safe



Neat handwriting

So you can go back and revise your work

1. =

Layout appropriate to the task – headings, subheadings, or bullet points

2. =

To support revision

TAKE PRIDE IN YOUR WORK

WALES HIGH SCHOOL



EVERY LESSON, EVERY TIME.

Positive Behaviour Points



Negative Behaviour Points



★★ REWARDS ★★

INFORMATION

Over the course of the year, you will have three Assessment Points. For each Assessment Point, your Achievement Points will be counted and for those students who have achieved either a **Bronze**, **Silver** or **Gold Award** there will be a selection of prizes available.

BRONZE 100+

Students who have achieved over 100 points during a term will receive a letter home and also exciting prizes such as cookies, chocolate, queue jump passes and many more!

SILVER 150+

Students who have achieved 150 points during a term will receive a letter home and also exciting prizes such as access to the games room, exclusive use of sport equipment, rewards trips and many more!

GOLD 200+

Students who have achieved over 200 achievement points will receive a letter home and also access to exciting prizes such as Amazon Vouchers, Movie/Sports/Reading afternoons, reward trips and many more!

Headteacher Award

At the end of the year, those students who have had excellent Attendance, Attitude To Learning Grades and Achievement Points will receive the Headteacher Award.

ATL Rewards

At each assessment point, your class teacher will give you an Attitude to Learning Grade. This will indicate how hard you have worked over the assessment period. Those students who have worked hard and achieved excellent ATL Grades will receive a letter home and will be able to choose from a number of exciting prizes, including vouchers, rewards afternoons and priority access to trips.

THE TRANSITIONS TEAM



MS M UNWIN
HEAD OF Y9/TRANSITION
LEAD
MU@WALESHIGH.COM



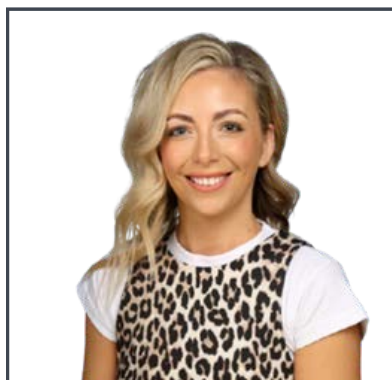
MR R HARRISON
DEPUTY HEADTEACHER
RH@WALESHIGH.COM



MRS S TRIPOLI
TRANSITION ADMIN
ST@WALESHIGH.COM



MRS S OWEN
LEARNING COMMUNITY
SUPPORT & SEN
SO@WALESHIGH.COM



MISS E TOMLINSON
LEARNING SUPPORT
TRANSITION
ET@WALESHIGH.COM

If you require further information please do not hesitate to contact a member of the Transition Team on **01909 771291** or visit www.waleshigh.com/transition

For general enquiries please contact the transition team by email: transition@waleshigh.com

FOUNDED IN 1970



CELEBRATING 50 YEARS OF EXCELLENCE

Wales High School Academy Trust
Storth Lane, Kiveton Park, Sheffield, S26 5QQ

Tel : 01909 771291
Email : contact@waleshigh.com
www.waleshigh.com

 @WalesHigh  Wales High School Academy Trust

