



BTEC Construction Certificate

Wales High School - Year 9 Subject Options

Subject Content - What will you be doing?

Pupils will be engaged in various construction activities. These will include bricklaying, painting and decorating, joinery, plastering, plumbing and electrics in a fully equipped workshop. For the BTEC qualification, you will evidence work by creating an e-portfolio plus two external assessments.

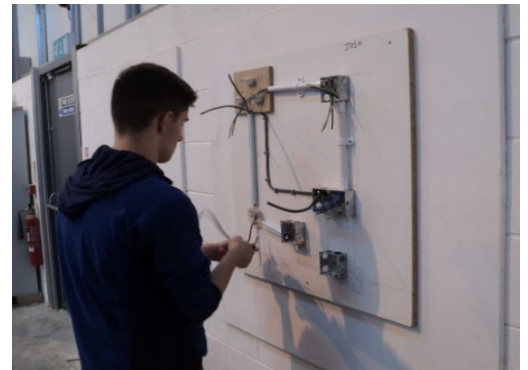
Work Related Learning in Construction

The Work Related Learning Course in Construction is aimed at students who are looking to prepare for the construction industry during KS4 in readiness for leaving school or for taking further courses at Level 3. This could then lead to an opportunity in the Sixth Form to complete a level 3 course which carries UCAS points. They will be offered a wide range of practical skills with additional careers education.



Key Points about the Subject

- All Personal Protection Equipment (PPE) provided.
- Six periods per week on the certificate and three hours per week on the award.
- Staff qualified to industry standard.
- A large practical element to the course.
- There is a high percentage of coursework with both practical and written tests.
- Only available to years 10 and 11.
- National certificate recognized by employers.
- A variety of evidence accepted for assessment.
- Pass rate of 85% for BTEC.



Who can I speak to for more information?

Mr T Orwin tor@waleshigh.com