

Wales High School

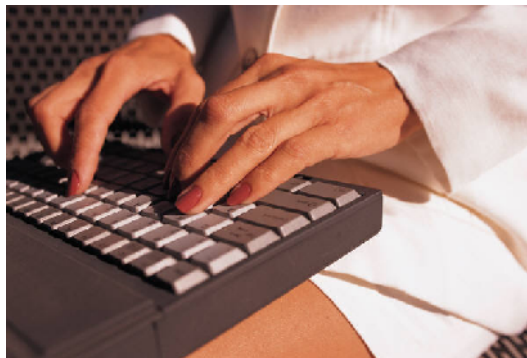
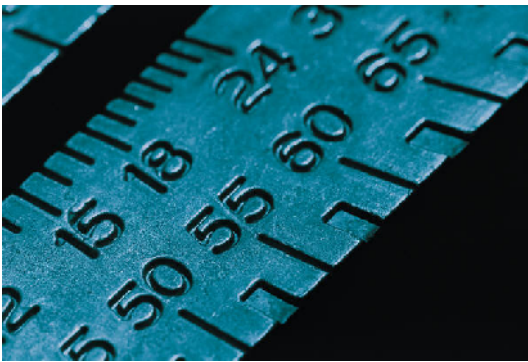
Year 9 Subject Options

2010



WORK RELATED LEARNING

ENGINEERING



The Work Related Learning course in ENGINEERING is aimed at students who are looking to prepare for the engineering industry during KS4 in readiness for leaving school. They will be offered a wide range of practical skills with additional careers education.

As an integral part of the course they will follow a Preparation for Work course, which offers students a choice of challenges and will lead to certification, if they successfully complete 60 hours of activity.

Work Related Learning

Qualification:

Performing Engineering Operations Level 1

Number of Option Choices required:

One day per week course.

Subject Content - What will you be doing?

Pupils will be engaged in various engineering activities. These will include practical work, electronics and Computer Aided Design. A series of practical tests have to be passed to gain the qualification. Pupils will do work to support their job applications using the Asdan Foundation for Work qualification.

5 Key points about the subject

- ✚ There is a large practical element to this course.
- ✚ Work is completed off site, but you are taken to the centre in a school minibus.
- ✚ Only available to Years 10 and 11.
- ✚ National certification recognised by employers.
- ✚ A variety of evidence accepted for assessment.

Coursework

High percentage of coursework with both practical and written tests.

Who to talk to for more information?

Mr. Shore